

[View this email in your browser](#)



[Click here to access the Hampshire East County Website](#)

LEADER NEWSLETTER

May 2018



IMPORTANT - General Data Protection Regulation 2018

You will be getting or may have already got an email from Girlguiding asking you to indicate your preferences for how you would like Girlguiding to communicate with you.

If you do not submit your preferences you will not receive information about events, activities and opportunities which your girls can take part in. To make sure you and your

girls get all the information you and they need to enjoy all Guiding has to offer please make sure that you 'Select All'. You can then choose your preferred methods of contact.



Programme Renewal Training

Your invitation to the training sessions in July will be with you very soon. In some venues there is a limit on numbers so please reply to your invitation as soon as possible to secure a place.

The trainings are for all Leaders, Assistant Leaders, Leaders-in-Training, regular Unit Helpers and Young Leaders doing their LQ. For those doing Module 1 of the LQ, you can count this for your required section programme training. The sessions are cross-sectional so, if you are a Leader in two or more sections, you will only need to attend once.



Residential Events in UK and Abroad

In April 2018 Girlguiding have introduced new forms and procedures for residential events in the UK and international trips

The need for revised and updated forms was identified by volunteers in order to make it easier to use for both the leader-in-charge and the Commissioner.

Changes include:

- A revised time frame for submission of the forms.
- A two part REN form.
- A revised emergency Home Contact procedure.

REN Requirements (not international)

REN part 1 must be sent to the Commissioner at least 12 weeks in advance of the event.

If an assessment is required, the module(s) to be assessed must be stated on the first page of the form and submitted to the Commissioner at least 16 weeks before the event.

REN part 2 must be sent at least 4 weeks in advance of the event.

Guidance and Requirements for Emergency Home Contacts

The Licence holder is responsible for organising a nominated emergency Home Contact for their group. They may wish to nominate several people to take on these responsibilities as it may not be possible for one person to be available 24 hours a day throughout the residential/trip.

The emergency Home Contact is the point of contact for a named individual (the Licence holder, their assistant or another member of the volunteer team) in the event of an incident. The emergency Home Contact is responsible for passing information both to and from the group and keeping others within Girlguiding informed as required. They may also need to contact emergency services and parents. Volunteers taking on this role must ensure they are familiar with this outline and understand what is expected of them.

It is essential that the emergency Home Contact is:

- An active member or recognised volunteer with Girlguiding.

- Is not related to or has a close personal relationship to anyone in the group.
- Someone who can deal with an emergency in a calm and effective manner.
- Has completed training at Safe Space level 1, as a minimum.

FAQs REN

Why do we have a new REN form?

Volunteers told us they wanted an updated form to make it easier for both leaders in charge and commissioners. The form was developed by volunteers and staff.

lead time for the REN

The four weeks' notice period didn't provide enough time for advisers and commissioners, as it didn't account for commissioners' holidays or if a leader needed to complete an assessment and have a mentor assigned to her. In many cases accommodation has to be booked more than three months in advance and parents also require longer to pay deposits and the final balance. 12 weeks is much more realistic and will allow for thorough planning.

Is there guidance as to how to use these forms?

Yes there's guidance for completing both the REN and permission to plan forms on GO

When should I start using these forms?

As soon as possible. We understand that the timescales may not fit exactly for everyone for this summer's residential. Old REN's can be used for residential events up to 31st August 2018, however we would prefer the new REN to be used where possible.

What happens if I cannot get the REN form to my commissioner within the required time?

If you're running a residential this summer then please give as much notice as possible. From 1 September you must follow the timescales laid out in the new REN forms. The guidance states that there may be times when you may not be able to meet the timescale (perhaps because an opportunity arises that does not give quite enough notice). Provided you're able to satisfy your commissioner that you can get all your planning in place and safely do the residential, you may be able to go ahead. This is called exceptional circumstances and is at the discretion of your commissioner

If I am doing a residential which is just across the border (eg Republic of Ireland) do I need to use the UK or International form?

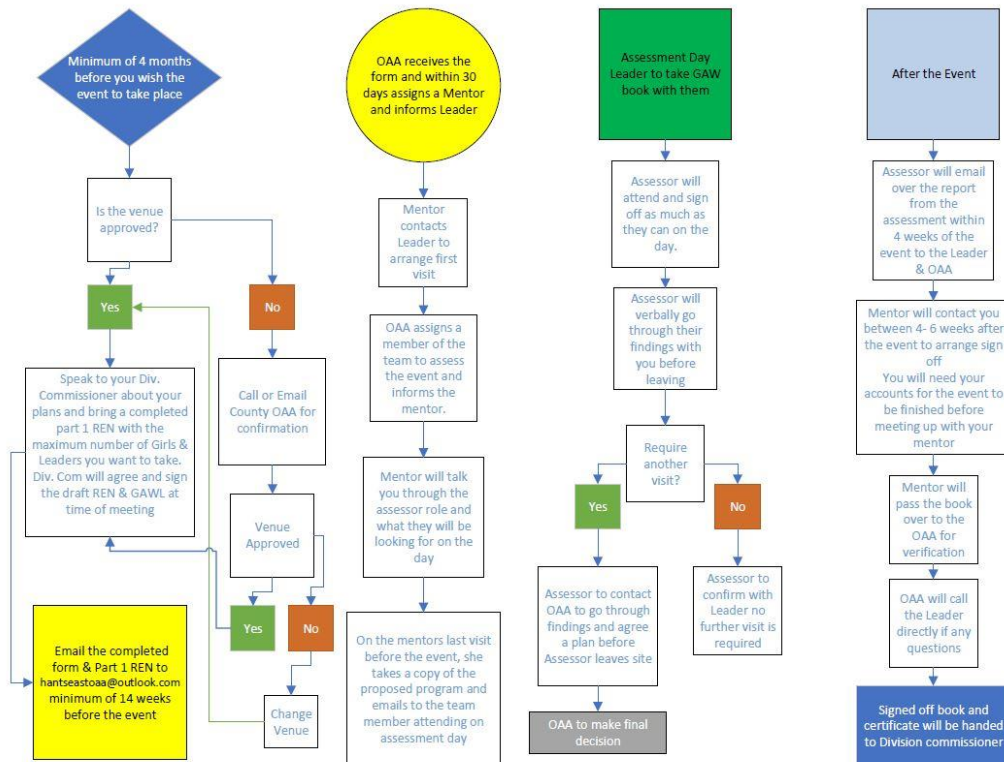
You should use the international form for any event that involves staying in or travelling through a country or countries outside the UK.

A County Commissioner attending her unit event as a Unit Leader can have the form authorised by her District Commissioner. If she is attending a County event as County Commissioner then the Chief Commissioner for the Country/Region needs to sign. If the Chief Commissioner is attending a Region or international event, the Chief Guide or Deputy Chief Guide must sign it off, or if they are unavailable then another Chief Commissioner.

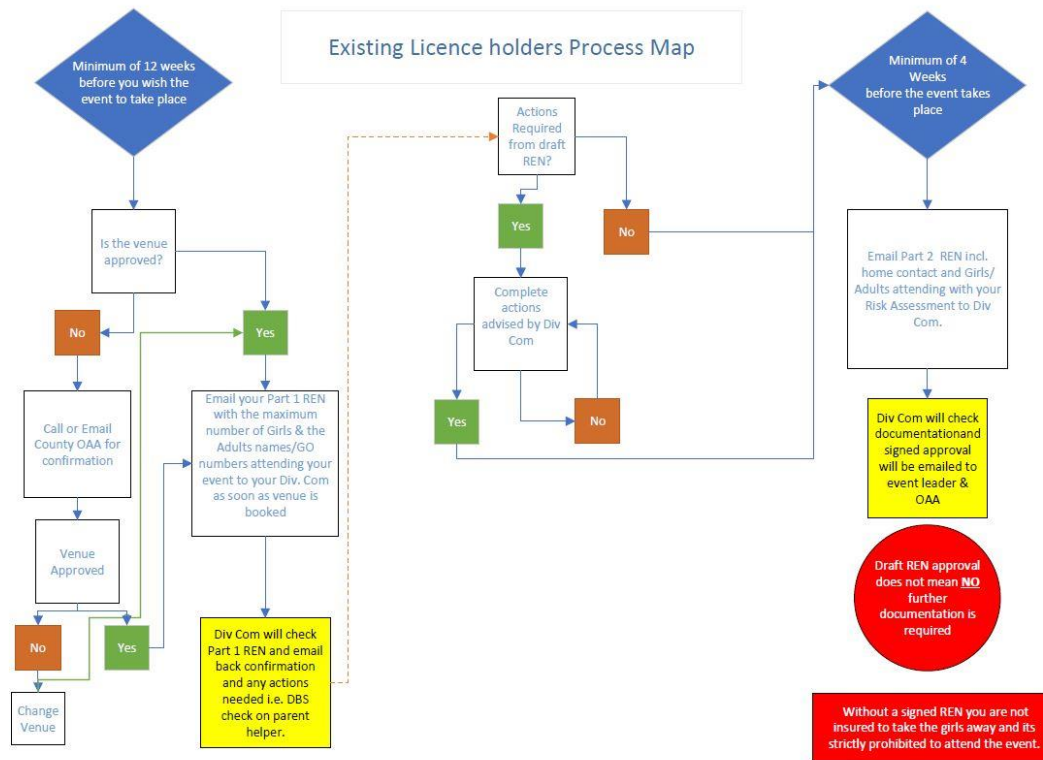
Forms must never be signed by family members; if the relevant Commissioner is related to the licence holder the form should be passed to the Commissioner above.

Large-scale events, a longer time frame of 12 to 18 months should be allowed.

Going Away with Licence Process Map



Existing Licence Holder Process Map



Calling all Rainbows and their Leaders

Come and join us for a fun day out.

There is going to be an exciting county Rainbow day trip to 4 Kingdoms Adventure Park on Saturday 6th October. There will be plenty to do there, come rain or shine! Feed the animals, go to a show, climb on all sorts of indoor and outdoor adventure playgrounds. Take a ride or explore a maze. All this and much more is included in the price, £15 per Rainbow and £7 for accompanying Leaders/adults. The price also includes transport by coach to and from the venue from different pick up

points across Hampshire East. Further information, consent forms and where to apply for places will be available very soon.

Tickets will be sold on a first-come, first-served basis.

Nicky Bull

County Events Coordinator



New Commissioner Appointments

We are pleased to announce the following appointments:

Sarah Clay - District Commissioner for Petersfield & Liss.

Ruth Whiting - District Chair for Liphook with effect from 1 April.

Kerry Collins & Yvonne Bough - joint Division Commissioners for Horndean with effect from 1 April.

Jane Bradford & Nettie Goddard - joint Division Commissioners for Fareham with effect from 1 May.



Hampshire North Camping Invite

Hello, I'm a Guide Leader from just over the border in Hampshire North.

Do you enjoy camping? Would you like to join our Guide camp at Lyons Copse from 22 to

29 July?

We have booked a large site and have plenty of (modern) tents/equipment which we would like to share with other Guides, Senior Section and/or Leaders. Showers and real toilets will be available!

You could come alone or bring some Guides/SS, or a group of Guides/SS could join us. It will be a fairly traditional camp, teaching the girls lots of camping skills including fire lighting and cooking on a fire. There will be challenges, wide games, campfires and lots more!

If you are interested, please email susanmitchell1911@gmail.com for more information.



Foxlease: Try, Inspire, Qualify - 21 to 23 September

This is a leader only event! It's a great chance to experience the best that Foxlease has to offer and to learn new skills in the process! Leaders can choose to stay for the whole weekend or just drop by for certain sessions and come away having abseiled, crate stacked, enjoyed archery and climbed. There is also the chance to come away with new qualifications in Food Hygiene, Boating, Fencing, Archery, Walking, Outdoor First Aid, Climbing, Water Safety and more - (leadership and training grants may be available to help offset some of the costs)

Here's the link to find out more:

<http://www.girlguidingsouthwest.org.uk/downloads/TIQ%202018%20Flyer.pdf>

Here's the booking form link:

<http://www.girlguidingsouthwest.org.uk/downloads/TIQ%202018%20Booking%20Form.pdf>

Action for Change

Action for Change weekend for Senior Section members 26th to 29th October at PGL Liddington in Wiltshire.



Action for Change is a really exciting project! Girls from all over the region will choose an issue that's important for them and create a social action project to run in their counties, to promote change and advocacy. They will learn to build their confidence, develop their public speaking skills and master project management. The period poverty coverage you may have seen by Girlguiding Scotland came as a result of similar projects,

We're looking for participants and network coordinators to help to run this project. The project is free for everyone taking part!

Here's the link to find out

more: <http://www.girlguidingsouthwest.org.uk/useful-information.html#actionforchange>

Girls can register their interest

here: <https://www.girlguiding.org.uk/social-action-advocacy-and-campaigns/social-action-and-campaigns/action-for-change-campaign/>

MAY DAY FAMILY FETE Monday 7th May

11AM to 3PM

At Explosion Museum of Naval Firepower,
Gosport, PO12 4LE



ANIMAL ENCOUNTERS

Meet creepy crawlies and their furry friends

FACE PAINTING  LIVE MUSIC



 ARTS & CRAFTS 

PORTSMOUTH MODEL BOAT CLUB



and much much more

FREE FETE ADMISSION

PLUS £2 museum entry for Gosport residents. Proof required. Under 5's Go FREE

SEPARATE CHARGES FOR SOME ACTIVITIES

For further information please contact:

023 92 505 600 or families@nmrn.org.uk

www.nmrn.org.uk



EXPLOSION
MUSEUM

THE
NATIONAL
MUSEUM





Dates for your Diary

2018

- 21 June A Safe Space Level 2 training
- 23 June First Response & First Response Renewal
- 25 June Leadership Day for New Leaders training part 1
(section training to be completed as part of
Programme Renewal)
- 2 - 13 July Programme Renewal training
[further details to follow]
- 16 Sept First Response & First Response Renewal
- 10 Oct First Response Renewal
- 3 Nov First Response
- 6 Nov A Safe Space Level 2 training
- 7 Nov Money Management and Accounts training
- 10 Nov A Safe Space Level 3 training (Region training)
- 18 Nov Leadership Day for New Leaders training
- 21 Nov First Response Renewal

Copyright © 2017 Hampshire East Guirlguiding. All rights reserved.

Our mailing address is:
hantseastadm@outlook.com